



MARCH / APRIL 2010

## Did You Know?

That Our **Gateway Supply Company** location in **Spartanburg, South Carolina** sells many different varieties of lighting fixtures from: **KI-CHLER, MAXIM, Q U O R U M, KALCO, VOLUME, SEAGULL, NUVEO** and more!



## Tax Credits - Take advantage of Federal Tax Credits for Energy Efficient Building Property

The federal tax credit is limited to 30% of cost to a maximum of \$1500. Home improvements must be placed in service from January 1, 2009 until December 31, 2010. Additional state and local utility incentives may also be available. Please consult with your tax advisor for eligibility requirements and amount of tax credit.

*\*Ask your Gateway Supply Company sales associate to see if your product qualifies for the Federal Tax Credit.*



## January Housing Starts at Strongest Pace in Six Months!

Housing production in January rose 2.8% to a seasonally adjusted annual rate of 591,000 units, its strongest pace in six months, according to figures released by the U.S. Commerce Department on February 17. "Builders are starting to see the positive impacts of home buyer tax credits and other favorable buying conditions in terms of consumer demand, and are cautiously increasing production to meet that demand," said NAHB Chairman Bob Jones.....[click here to read more.](#)



**NAHB**  
NATIONAL ASSOCIATION  
OF HOME BUILDERS

## South Carolina 2010 Outlook

*January 2010 By: Scott Judy*

**South Carolina: Surging?** Boeing's selection of South Carolina for its new final assembly plant for the **787 DREAMLINER** has the state feeling positive. McGraw-Hill Construction expects that to continue in 2010, as it predicts South Carolina to have the second-strongest percentage improvement in new contracts for states in the Southeast Construction region. The company forecast a 16% overall increase, for a total value of about \$8.4 billion for 2010.....[click here to read more.](#)

## North Carolina 2010 Outlook

*January 2010 By: Scott Judy*

**North Carolina: Mild Upturn** The past year wasn't anything to celebrate in the Tar Heel State, either. By McGraw-Hill Construction's estimates, the value of new contracts fell 26% for a 2009 total of almost \$14.2 billion, with residential (-39%) and non building (-27%) the most impacted construction types. An expected 5% uptick should equate to nearly \$14.9 billion in new 2010 contracts in North Carolina says McGraw-Hill Construction.....[click here to read more.](#)

## Gateway Supply Company Myrtle Beach Showroom Grand Re-opening!

The Myrtle Beach Showroom Grand Opening Celebration will be Thursday evening  
*March 11th from 5:00 PM until 8:00 PM*  
*Light food and refreshments will be served*

We invite anyone within the design and construction community to attend

# GATEWAY SUPPLY COMPANY

Kohler **HIGH-PERFORMANCE** shower systems allow **UNLIMITED CUSTOMIZATION**

THE BOLD LOOK  
OF **KOHLER**®



DTV DIGITAL INTERFACE: PORTRAIT SETTING  
PICTURED: K695-1CP  
LIST PRICE: \$1,176.50  
*(Controls Shower, Music, Lights, Steam and a Chromatherapy Rain Panel)*

WATER TILE 22-NOZZLE OVERHEAD AMBIENT RAIN SHOWER WITH STIMULATING SPRAY  
PICTURED: K-8038-CP  
LIST PRICE: \$2,838.95  
*(You Can Also Get the Overhead Rain Shower WaterTile 54-Nozzle with Soothing Spray)*

WATERTILE 22-NOZZLE BODY SPRAY  
THIS HAS A STIMULATING SPRAY  
PICTURED: K8003-CP  
LIST PRICE: \$155.10  
*(You Can Also Get the WaterTile 54-Nozzle Body Spray with Soothing Spray)*

SOUNDTILE SPEAKERS (PAIR)  
PICTURED: K8033-CP  
LIST PRICE: \$319.05  
*(Other finishes available)*

Imagine, after a long and stressful day, coming home to a shower worthy of a day spa. Soft music, color-changing lights, soothing water massage and gentle steam—the ultimate shower we all dream about. Well, dream no longer: **Custom Showers** are quickly becoming high on the list of home must-haves. And with all the new products and technology available, the perfect shower has never been so easy to achieve.....*CLICK HERE TO SEE WHAT ELSE KOHLER HAS TO SAY ABOUT THEIR HIGH PERFORMANCE SHOWER OPTIONS.*

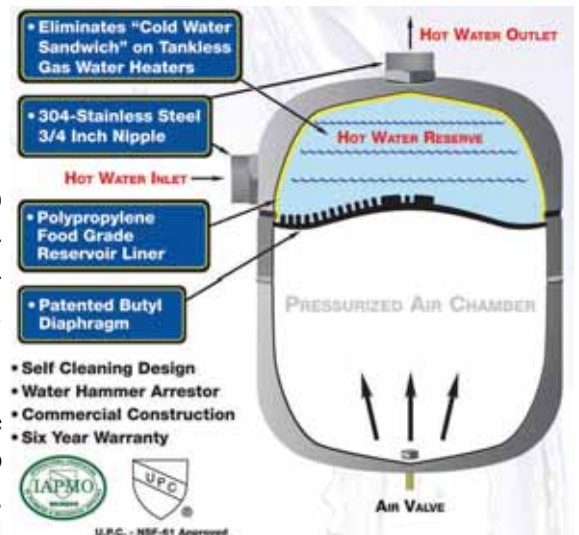
## HOT SHOT® DUAL PORT™

**SELF CLEANING THERMAL EXPANSION TANKS**

*Eliminate "Cold Water Sandwich"*

ACT D'MAND® Systems, manufacturer of the D'MAND CIRC® Electronic Control Pumping Systems and Structured Plumbing® Systems are introducing into the market a patented revolutionary new concept in expansion tanks for residential and small commercial buildings. The product is called the HOTSHOT® DUAL™ PORT™!

Expansion tanks have been around for many years; however they are designed as only an expansion tank to relieve the pressure that builds up within the hot/cold water lines in the building. Within a few months, these existing expansion tanks tend to develop buildup in the tank and inlet thus leading to failure. Plus the water in the expansion tank becomes stagnate as very little of the water in the reservoir is displaced back into the hot water line which is considered potable water supply. The typical life of an existing expansion tank is around one year on most residential homes. Once the expansion tank becomes clogged it no longer functions as an expansion tank and puts added pressure on the water relief valve. The Dual Port comes in two sizes, model 12-A501 2 gal & 12-A502 4.5 gal. [WWW.GOHOTWATER.COM](http://WWW.GOHOTWATER.COM)





# TAX CREDIT SYSTEMS

## ENTRY LEVEL SPLIT HEAT PUMP / TAX CREDIT SYSTEMS

## MAINLINE SPLIT HEAT PUMP / TAX CREDIT SYSTEMS

CONDENSER	AIR HANDLER	AHRI CERT. #	SEER	ERR	HSPF	
1 1/2	N4H419AKB	FEM4X2400A	3456303	15.5	12.5	8.5
		*FXM4X1800A	3688253	16	13	8.5
		FEA4X2405A (APARTMENT)	3456308	15.5	12.5	8.5
1 1/2	N4H418AKB	*FXM4X1800A	3663445	16	13.2	8.5
	2	N4H424AKB	FEA4X3007A (APARTMENT)	3464222	15	12.5
		**FEM4P30+TXV (NEW)	3693421	15	12.5	8.7
		FEM4X3000A	1132093	15	12.5	8.6
		FVM4X2400A (VAR.)	1130011	15	12.5	8.8
		FXM4X2400A	3663451	15	12.5	8.7
2 1/2	N4H430AKB	FEA4X3611A (APARTMENT)	3464224	15.5	12.5	8.5
		FEM4X3000A	1130847	15	12.5	8.5
		FVM4X2400A (VAR.)	1130025	15	13	8.5
		FVM4X3600A (VAR.)	1130032	15	13	8.5
		FXM4X3000A	3663457	15.5	13	8.5
3	N4H436AKB	**FEM4P42 (NEW)	3693429	15	12.5	8.6
		FEM4X3600A	1131645	15	12.5	8.6
		FVM4X2400A (VAR.)	1130046	15	12.5	8.5
		FVM4X3600A (VAR.)	1130053	15	13	8.5
		FXM4X3600A	3663463	15.5	13	8.7
3 1/2	N4H442AKB	**FEM4P42+TXV (NEW)	3693432	15	12.5	8.5
		FEM4X4200A	1131372	15	12.5	8.5
		FVM4X4800A (VAR.)	1130088	15	13	8.7
		FXM4X4200A	3663469	15	12.5	8.5
4	N4H448AKB	FEM4X4800A	1131183	15	12.5	8.5
		FVM4X4800A (VAR.)	1130151	15	12.5	8.5
		FXM4X4800A	3663475	15	12.5	8.5
5	N4H460AKB	FEM4X6000A	1131106	15	12.5	8.7
		FVM4X6000A (VAR.)	1130207	15	12.5	8.7
5	N4H461GKA	FEM4X6000A	3344748	15	12.5	8.7
		FVM4X6000A (VAR.)	3344759	15	12.5	8.7

CONDENSER	AIR HANDLER	AHRI CERT. #	SEER	ERR	HSPF	
1 1/2	H4H419GKD	FEA4X2405A (APART.)	3456562	15.5	12.5	8.5
		FEM4X2400A	3456559	15.5	12.5	8.5
		FVM4X2400A	3456560	16	13	8.5
		*FXM4X2400A	3688247	16	13	8.5
2	H4H424GKD	FEA4X3007A (APART.)	3464210	15	12.5	8.5
		**FEM4P30+TXV	3693933	15	12.5	8.7
		FEM4X3000A	3153287	15	12.5	8.6
		FVM4X2400A (VAR.)	3153288	15.5	12.7	8.8
		*FXM4X2400A	3672072	15	12.5	8.7
2 1/2	H4H430GKD	FEA4X3611A (APART.)	3464212	15.5	12.5	8.5
		**FEM4P30+TXV	3693934	15	12.5	8.5
		FEM4X3000A	3153340	15	12.5	8.5
		FVM4X2400A (VAR.)	3153343	15.5	13	8.5
		FVM4X3600A (VAR.)	3153344	16	13	8.5
		*FXM4X3000A	3672074	15.5	13	8.5
3	H4H436GKD	**FEM4P42+TXV	3693937	15	12.5	8.6
		FEM4X3600A	3153396	15	12.5	8.6
		FVM4X2400A (VAR.)	3153398	15	12.5	8.5
		FVM4X3600A (VAR.)	3153399	15	13	8.5
		FXM4X3600A	3672076	15.5	13	8.7
3 1/2	H4H442GKD	FEM4X4800A	3153450	15	12.5	8.5
		FVM4X4800A (VAR.)	3153452	15.5	12.5	8.5
		*FXM4X4800A	3672079	15.5	12.5	8.7
4	H4H448GKD	FEM4X6000A	3153489	15	12.5	8.5
		FVM4X4800A (VAR.)	3153490	15	12.5	8.5
5	H4H461GKD	*FXM4X4800A	3672080	15	12.5	8.6
		FEM4X6000A	3344736	15	12.5	8.7
		FVM4X6000A (VAR.)	3344747	15	12.5	8.7
		*FXM4X6000A	3672083	15	12.5	8.9

\*FXM4X REPLACING FEM4X

\*FEM4P REPLACING FSM4X

## MAINLINE A/C / TAX CREDIT SYSTEMS

## ENTRY LEVEL A/C / TAX CREDIT SYSTEMS

CONDENSER	FURNACE	COIL	AHRI CERT. #	SEER	ERR	
1 1/2	H4A418GKD	H9MVX060F12A	EDM4X30FAT	3387518	16	13
		*H8MPV050F12C	EDM4X36FAT	3334835	16	13
		H9MPV040F12A	EHD4X36AAT (SLAB)	3334841	16	13
		H9MPV050F12B	EHD4X36AAT (SLAB)	3334839	16	13
		*H8MPV050F12C	EHD4X36AAT (SLAB)	3334838	16	13
2	H4A424GKD	*H8MPV100J20B	EDM4X24FAT	3335109	16	13
		H9MVX080J20A	EDM4X30FAT	3335115	16	13
		H9MPV100J20D	EDM4X30FAT	3335114	16	13
		H9MVX060F12A	EDM4X30FAT	3210831	16	13
		*H8MPV075F14C	EDM4X36FAT	3335117	16	13
		H9MVX080J20A	EHD4X30AAT (SLAB)	3210835	16	13
		*H8MPV075F14C	EHD4X30AAT (SLAB)	3150911	16	13
		H9MVX060F12A	EHD4X36FAT (SLAB)	3335136	16	13
2 1/2	H4A430GKD	*H8MPV100J20C	EDM4X36JAT	3150943	16	13
		H9MVX100L20A	EDM4X42LAT	3387522	16	13
		H9MVX080J20A	EDM4X48JAT	3387524	16	13
		*H8MPV100J20C	EDM4X36AAT (SLAB)	3150961	16	13
		H9MVX100L20A	EHD4X42AAT (SLAB)	3342774	16	13
3	H4A436GKD	*H8MPV125J20C	EDM4X60JAT	3342982	16	13
		*H8MPV125J20C	EHD4X60AAT (SLAB)	3342989	16	13
3 1/2	H4A442GKD	*H8MPV125J20C	EDM4X60JAT	3343145	16	13
		*H8MPV125J20C	EHD4X60AAT (SLAB)	3343149	16	13
4	H4A449GKD	*H8MPV100J20B	EDM4X60JAT	3413781	16	13
		*H8MPV100J20B	EHD4X60AAT (SLAB)	3413805	16	13
		H9MPV125L20C	EHD4X60AAT (SLAB)	3413808	16	13
5	NO MATCHES					

CONDENSER	FURNACE	COIL	AHRI CERT. #	SEER	ERR	
1 1/2	N4A418AKA	H9MVX060F12A	EDM4X30FAT	3322890	16	13
		H9MPV050F12C	EDM4X30FAT	3246016	16	13
		*H8MPV050F12C	EHD4X36AAT (SLAB)	3246012	16	13
		H9MPV050F12C	EHD4X36AAT (SLAB)	3315472	16	13
2	N4A424AKB	H9MVX080J20A	EDM4X30FAT	3387527	16	13
		*H8MPV075F14C	EDM4X36FAT	3315664	16	13
		H9MPV100J20D	EDM4X36JAT	3246042	16	13
		H9MVX080J20A	EHD4X36AAT (SLAB)	3246052	16	13.2
		*H8MPV075F14C	EHD4X36AAT (SLAB)	3246032	16	13.2
2 1/2	N4A430AKB	*H8MPV100J20C	EDM4X36JAT	1440024	16	13
		H9MPV125L20C	EDM4X42LAT	3246079	16	13
		H9MVX100L20A	EDM4X42LAT	3323302	16	13
		H9MVX080J20A	EDM4X48JAT	3323308	16	13
		H9MPV100J20D	EDM4X48JAT	3323312	16	13
		*H8MPV100J20C	EHD4X36AAT (SLAB)	1440129	16	13
		H9MVX100L20A	EHD4X36AAT (SLAB)	3213130	16	13
3	N4A436AKA	*H8MPV125J20C	EDM4X60JAT	3634292	16	13
		*H8MPV125J20C	EHD4X60AAT (SLAB)	3323566	16	13
3 1/2	N4A442AKB	*H8MPV125J20C	EDM4X60JAT	3246157	16	13
		*H8MPV100J20C	EHD4X60AAT (SLAB)	3246154	16	13
4	N4A449AKB	*H8MPV100J20B	EDM4X60JAT	3382640	16	13
		*H8MPV100J20B	EHD4X60AAT (SLAB)	3382664	16	13
		H9MPV125L20C	EHD4X60AAT (SLAB)	3382667	16	13
5	NO MATCHES					

\*H8MPV MODELS ARE NOT NORMAL STOCKING UNITS

\*PLEASE NOTE THAT THE COILS DO NOT SPECIFY WIDTHS—AHRI CERTIFICATE NUMBERS MAY VARY DEPENDING ON COIL WIDTHS. PLEASE CONFIRM ON WWW.AHRIDIRECTORY.ORG OR CHECK WITH A GATEWAY SALES ASSOCIATE.

\*NOTE THAT THERE ARE MANY MORE AVAILABLE MATCHES USUALLY WITH LARGER FURNACES AND / OR COILS. WE ATTEMPTED TO MATCH THE MOST ECONOMICAL SYSTEMS.



# GATEWAY SUPPLY COMPANY

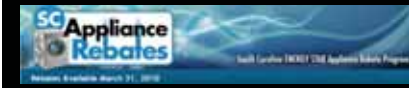
## MARCH HVAC SPECIALS!

*Specials end March 31st 2010*

<u>PRODUCT DESCRIPTION</u>	<u>BUY QTY</u>	<u>UNIT QTY</u>	<u>COST / UNIT</u>	<u>EXTENSION</u>
3/4" PR200 PVC PIPE	BUNDLE	200 FT	.125 / FT	\$25.00
3/4" SCH 40 PVC PIPE	BUNDLE	200 FT	.195 / FT	\$39.00
555 2" UL181 FLEXFIX TAPE	12 CT	12 EA	\$6.00 / EA	\$72.00
DC181 3" FLEXFIX METALIZED TAPE	CASE	16 EA	\$9.00 / EA	\$144.00

<u>LINESETS</u>	<u>BUY QTY</u>	<u>UNIT QTY</u>	<u>COST / UNIT</u>	<u>EXTENSION</u>
3/8" X 5/8" X 3/8" W 30 FT	1 CASE	12	\$67.25	\$807.00/CS
3/8" X 5/8" X 3/8" W 50 FT	1 CASE	8	\$102.04	\$816.32/CS
3/8" X 3/4" X 3/8" W 30 FT	1 CASE	12	\$76.77	\$921.24/CS
3/8" X 3/4" X 3/8" W 50 FT	1 CASE	8	\$118.12	\$944.96/CS
3/8" X 7/8" X 3/8" W 30 FT	1 CASE	12	\$99.58	\$1194.96/CS
3/8" X 7/8" X 3/8" W 50 FT	1 CASE	8	\$153.20	\$1225.60/CS
3/8" X 5/8" X 3/8" W 30 FT	2 CASE	12	\$63.34	\$760.08/CS
3/8" X 5/8" X 3/8" W 50 FT	2 CASE	8	\$96.11	\$768.88/CS
3/8" X 3/4" X 3/8" W 30 FT	2 CASE	12	\$72.31	\$867.72/CS
3/8" X 3/4" X 3/8" W 50 FT	2 CASE	8	\$111.25	\$890.00/CS
3/8" X 7/8" X 3/8" W 30 FT	2 CASE	12	\$93.79	\$1125.48/CS
3/8" X 7/8" X 3/8" W 50 FT	2 CASE	8	\$144.29	\$1154.32/CS

# GATEWAY SUPPLY COMPANY



## SOUTH CAROLINA APPLIANCE REBATES

A total of \$3.9 million will be available in rebates to South Carolina residents purchasing ENERGY STAR appliances in the state beginning March 31, 2010 and continuing until all funds are exhausted. This program is funded by South Carolina's share of federal stimulus funds being distributed to each state for appliance rebates.

For appliances purchased in a store, the rebate will be applied instantly at the register. Installers of whole-house equipment such as water heaters and HVAC systems will reserve rebates online and then provide customers with mail-in forms. Rebates will not apply to online purchases or purchases made prior to March 31, 2010. Customers participating in this program will be required to let retailers and installers recycle their old, inefficient appliances to ensure that they are taken off the power grid.

Products to be Rebated	Rebate Levels (\$)
Clothes washers	\$100
Dishwashers	\$50
Refrigerators	\$50
Room Air Conditioning Units	\$50
Central Air Conditioning Units	\$200
Heat Pump	\$500
Gas Furnace	\$500
Gas-Condensing Water Heater	\$400
Electric Heat Pump Water Heater	\$400
Hi-Efficiency Gas Storage Water Heater	\$100
Hi-Performance Gas Storage Water Heater	\$200
Gas Tankless Water Heater	\$400
Solar Electric Water Heater	\$400



## NORTH CAROLINA APPLIANCE REBATES

The State of North Carolina will implement a two-phase rebate program to help residents replace older, inefficient appliances with ENERGY STAR® qualified appliances. The first phase of the program, tentatively scheduled to begin in April 2010, will be for a limited-time. It will include instant rebates for refrigerators, freezers, clothes washers, and dishwashers. A Phase 2 mail-in rebate for several types of water heaters, as well as gas furnaces, and central air conditioners is tentatively scheduled to begin in June 2010 and will continue until remaining funds are depleted.

### *Eligible products include*

- *Refrigerators*
- *Freezers*
- *Clothes Washers*
- *Dishwashers*
- *Gas Storage Water Heaters*
- *Electric Heat Pump Water Heaters*
- *Solar Water Heaters*
- *Gas Furnaces*
- *Central Air Conditioners*

Retailers are required to recycle old appliances in accordance with state laws. Contact: [North Carolina Department of Administration, State Energy Office](#)

**Total Funding: \$8,849,000**

*Program information subject to change. Rebates may be offered for a limited time only. Before purchasing a product, check with your program sponsor to ensure rebates are available, and to confirm product eligibility and program requirements. Products purchased must meet efficiency criteria as established by the state.*

# GATEWAY SUPPLY COMPANY

## INDUSTRY LINKS

Link to Mechanical Contractors Association of SC  
<http://www.mcasc.com/>

Link to Plumbing Heating Cooling Contractors NC  
<http://www.phccnc.org/>

Link to South Carolina Association of Heating & Air Conditioning Contractors  
<http://www.schvac.org/>

Link to AHRAE  
<http://www.ashrae.com/>

Link to ASPE  
<http://aspe.org/>

Link to Home Builders Association of SC  
<http://www.hbaofsc.com/>

Link to Home Builder Association of NC  
<http://www.nchba.com/>

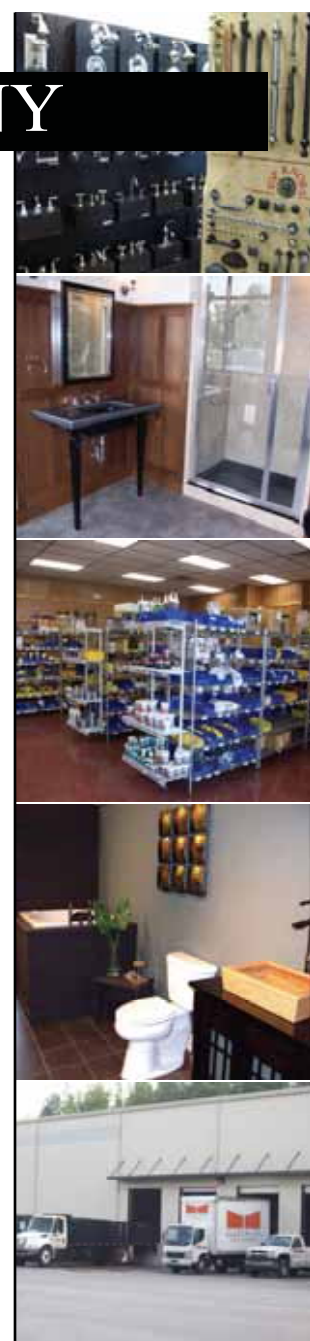
Link to Home Builders Association of GA  
<http://www.hbag.org/>

American Institute of Architects:  
<http://www.aia.org/>  
<http://www.aiaa.org/>  
<http://www.aiaag.org/>

American Society of Interior Designers  
<http://www.asidcarolinas.org/>  
<http://www.asidga.org/>

CLICK LINK TO VIEW PAST  
EDITIONS OF  
THE GATEWAY GAZETTE

THE GATEWAY  
GAZETTE



## GATEWAY SUPPLY COMPANY, INC. LOCATIONS

### COLUMBIA, SC

1312 Hamrick Street  
Columbia, SC 29201

**800-922-5312**

803-771-7160 Plumbing  
803-799-7632 HVAC

**803-376-5614 Fax**

### GREENVILLE, SC

70 Chrome Dr.  
Greenville, SC 29615

**800-922-9566**

864-235-7800 Plumbing  
864-770-0860 HVAC

**864-235-7900 Fax**

### HARTSVILLE, SC

1015 Bobo Newsome Hwy  
Hartsville, SC 29550

**800-766-3159**

843-383-4574

Plumbing/HVAC

**843-383-9520 Fax**

### ROCK HILL, SC

1369 Firetower Road  
Rock Hill, SC 29731

803-324-3145

Plumbing

**803-324-3806 Fax**

### SPARTANBURG, SC

2320 South Pine Street  
Spartanburg, SC 29302

**800-379-5548**

864-585-8825

Plumbing

**864-585-4978 Fax**

### COLUMBIA NORTHEAST, SC

1110 Sparkleberry Lane Ext.  
Columbia Northeast, SC 29223

803-736-4848

Plumbing/HVAC

**803-736-3392 Fax**

### MYRTLE BEACH, SC

4928 Hwy 17, Bypass South  
Myrtle Beach, SC 29588

843-293-9367 Plumbing

843-293-9372 HVAC

**843-293-9377 Fax**

### WEST GREENVILLE, SC

2200 W. Parker Road  
Greenville, SC 29617

864-246-4322

Plumbing/HVAC

**864-246-4764 Fax**

### ANDERSON, SC

5299 Hwy 76  
Pendleton, SC 29670

864-622-0176

Plumbing/HVAC

**864-622-0181 Fax**