

# THE GATEWAY GAZETTE

Your Gateway to Possibilities

WWW.GATEWAYSUPPLY.NET

MAY / JUNE

## Getting Off to a Slow Start in 2011, Housing Expected to Show Its Strength in 2012



Despite a disappointingly slow first quarter of 2011, the pace of housing activity will pick up some momentum for the balance of the year and actually start feeling like a real recovery in 2012, according to panelists participating in NAHB's Construction Forecast Webinar on April 27. With more foreclosures in the pipeline and some further decline in housing prices nationwide, the industry is not entirely out of the woods yet, the economists warned.

But home prices nationally are just about back to where they should be relative to income following explosive growth during the boom, mortgage rates will remain relatively affordable and an increasing number of prospective buyers will start coming out of the woodwork as they see job prospects and the national economy continue to improve.



Panelists also cited wide variations in local market conditions across the country, with those that became most overheated at the peak of the cycle having the most ground to regain on the road back to health.

[CLICK HERE TO READ MORE](#)

## Economics & Finance

### *FHA Pilot Program Offers Low-Cost Loans for Energy-Saving Home Improvement*

FHA Pilot Program Offers Low-Cost Loans for Energy-Saving Home Improvements. Eighteen lenders are participating in a two-year pilot program backed by the Federal Housing Administration (FHA) that offers home owners low-cost loans to make energy-saving improvements to their home.



[CLICK HERE TO READ MORE](#)

## Gateway Supply Company

# Your A.O. Smith Supplier!

Gateway Supply Company is proud to announce our recent partnership with A.O. Smith. Gateway will be stocking A.O. Smith's full line of residential and commercial water heating products throughout our network of branches.

A.O. Smith is the world leader in water heater production and is also the leading innovator in high-efficiency water heating technologies. From electric heat pump water heaters to a variety of solar water heating systems, A.O. Smith is creating new ways to heat more water with less energy.

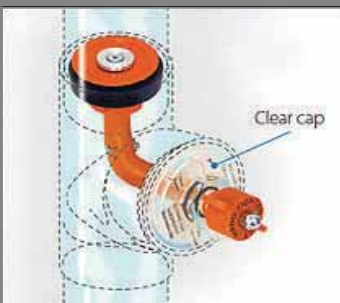
Additionally, A.O. Smith is a big contributor to our local economy. A.O. Smith owns ten global manufacturing locations. Of the ten, three are local; McBee, South Carolina, Charlotte, North Carolina, and Ashland City, Tennessee.

Gateway Supply Company is your source for A.O. Smith's advanced residential and commercial water heating solutions. [Click Here](#) to view A.O. Smith's most recent water heating innovations!



## Mechanical Cleanout Test Plug

The Test-Tite® Mechanical Cleanout Test Plugs are designed for use in the cleanout to test up to 40 vertical feet of pipe. No tools or equipment are required for a quick installation. With its clear cap, water can be released without splashing out of the cleanout. The Mechanical Cleanout Test Plug is the latest innovation in the Test-Tite® Series.....[CLICK HERE TO READ MORE](#)



## The Everpure Technology Means More Efficient Filtration!

Everpure's unique Micro-Pure® precoat technology



has set the standard for the water filtration industry. The major difference is in the filter itself. For starters, the membrane has nearly six times the filtering surface area of carbon filters, so it's like packing nearly six filters into one canister.

Next, rather than using a solid carbon block to filter water, this technology's accordion-folded filter membrane is covered on both sides with the very fine activated carbon coating, called Micro-Pure®, and this combination offers consistent performance. With the exclusive precoat filtration, off-tastes, odors and particles as small as one half-micron in size—including lead and asbestos—are removed, making your drinking water as clean and healthy as possible. In fact, some models even offer added protection against VOCs, THMs and MTBE, as well as a bacteriostat to combat the growth of bacteria in the cartridge. In short, we're removing contaminants better than other filters in the industry.

Everpure's precoat filters also ensure that the last drop of water is as great as the first—not only in taste, but in performance as well. Everpure filters provide continuous, reliable functionality through the entire life of the cartridge, securing balanced filtration of particles and chemicals. This technology is one that other filter companies have unsuccessfully tried to duplicate, and one which yields superior filtration efficiency.

*Pictured is the PBS-400 Full System for Kitchen, Wet Bar, Master Bath, ect. Filters 3,000 gallons; 2.2 gpm flow rate. DOES NOT require separate filter faucet. Also certified by NSF International.*



## *New! DELTA Trinsic™ Pull Down w/ Diamond™ Seal Technology*

Style and functionality harmoniously coexist in the new Trinsic kitchen collection. The sleek, minimalist design perfectly complements today's modern home. The pull-down model features MagnaTite® docking for smooth ease-of-use. On the inside, we've integrated our DIAMOND™ Seal Technology for enhanced reliability and performance. A coordinating bar/prep faucet is also available.

Finish Available:

- Champagne Bronze
- Artic Stainless
- Chrome



**DELTA**  
FAUCET COMPANY

## KOHLER®

# numi

Introducing Numi, Kohler's most advanced toilet. The Numi toilet combines unmatched design, technology and engineering to bring you the finest in personal comfort and cleansing. From its striking form and features to its unrivaled water efficiency, the Numi toilet marks a new standard of excellence in the bathroom.



## Underscore CUBE TUB

Eye-catching and angular, [Kohler's Underscore Cube tub](#) offers a deep relaxing soak. With deep bathing wells, similar to a traditional Japanese soaking tub, the user is almost completely immersed in water. Available with BubbleMassage, which features 122 staggered airjets and 18 levels of airflow adjustability, the unit can be installed as a drop-in or undermount. Designed for two bathers, the tub features integral molded seats to accommodate bathers of different heights at two separate depths. The unit measures 48 in. x 48 in. x 34 in. and is available in white or biscuit.



THE BOLD LOOK  
OF **KOHLER®**



## ELEVANCE™ RISING WALL BATH KOHLER

The Elevance rising wall bath offers the relaxing bathing experience you desire, with added accessibility. A stylish alternative to walk-in and institutional looking options, this bath lets you sit down with ease as soon as you enter. Sized for a standard 5' alcove, it can replace an existing bath or be used in new construction.



# GATEWAY SUPPLY COMPANY

## NEW CONDENSING (90+%) GAS FURNACES

Many of you have heard the news that International Comfort Products is well underway with a complete replacement of the condensing (90+%) gas furnace model line. Details will become more available as we approach the October 2011 first shipment date.

Phasing <u>OUT</u>		Phasing <u>IN</u>	
<b>Step 1, now through Fall 2011</b>			
H9MVX	95%, 40" tall, ECM variable speed	G9MAC	98%, 35" tall, communicating, 2-stage, ECM variable speed
H9MPV	92%, 40" tall, 2-stage, ECM variable speed	G9MVT	96%, 35" tall, 2-stage, ECM variable speed
H9MPT	92%, 40" tall, 2-stage, PSC	G9MXT	95%, 35" tall, 2-stage, ECM
		G9MXE	95%, 35" tall, single-stage, ECM
<b>Step 2, beginning early 2012</b>			
H9MPD	92%, 40" tall, single-stage, PSC	N9MSE	95%, 35" tall, single-stage, PSC
H9MPX	95%, 40" tall, single-stage, PSC	N9MSB	92%, 35" tall, single-stage, PSC
N9MPD	92%, 40" tall, single-stage, PSC		
N9MP2	90%, 40" tall, single-stage, PSC		



The new products contain features and components you have come to expect and trust:

- RPJ style primary heat exchanger
- Secondary Heat Exchanger: stainless steel tubing with aluminum fins (fin and tube), single pass
- Silicon-Nitride Hot Surface Ignitor
- Standard ICP flash codes on the control boards
- Blower assembly on rails for easy, upfront removal/install
- Maximum Strength warranties



# GATEWAY SUPPLY COMPANY

*We Are Now Stocking REFCO Recovery Machines & Vacuum Pumps!*



- Two Stage Rotary Vane Pump Design
- Compact Design with Aluminum Housing and Easy to Grip Carrying Handle
- Very Quiet Operation
- High Pumping Capacity Reduces Evacuation Time
- Carrying Handle Stays Cool to the Touch
- Both 1/4" and 3/8" SAE flare inlet connections allow for flexibility of connections (EC0-5 and EC0-9)
- Value Priced but Still Manufactured to the Highest Quality and Performance Specifications

REFCO ONLINE [CLICK HERE](#)



## CONNEXT3 NEW RATCHETING

**Better ideas for the real world**  **New Ratcheting Handle**

A forward or reverse ratchet driving mechanism, as well as the locked driving position of the New CONNEXT Ratcheting Handle, meets torque capacity standards (including ANSI) comparable to a 1/2-inch solid shaft driver! The clear, molded acetate, full grip is shock-proof, shatter-proof and fluted to fit any hand. And a quick-connect holder mechanism accepts any 1/4-inch hex shank power drive or insert bit as a shaft including all Malco hollow, or magnetic hex chuck drivers.

- Full, Stubby & Ratcheting style grips
- All handles feature a quick connect holder
- Color coded for easy size recognition



Mention that you saw this in the Gateway Gazette and purchase this product for only

**\$7.00!**

*price does not include tax  
offer expires June 30, 2011*



**CONNEXT**

# GATEWAY SUPPLY COMPANY

**H  
E  
I  
L**

## 2011 HEIL DEALER MEETING

### *Gateway Supply Company*

2011 Heil dealer meetings were held all across South Carolina for the Heil HVAC dealers. The meetings took place in Greenville, Columbia and Myrtle Beach during the month of April. This is a way for the dealers to learn about upcoming Heil products and to recognize our dealers for their accomplishments.



## OUR FEATURED GATEWAY EMPLOYEE



### Mark Crawford

Gateway Warehouse  
Greenville, South Carolina  
Branch 8 & 9

Mark has been an employee for Gateway Supply for 4 years. He enjoys golfing, gardening & hunting. He has been married to his wife Amy for 7 years.

# GATEWAY SUPPLY COMPANY

## 18th Annual Largemouth Bass Tournament 2011 Held at Lake Greenwood

Gateway Supply Company hosted our 18th Annual Largemouth Bass Tournament that was held on April 8th at Lake Greenwood. Participants were limited to the use of artificial bait only. Qualifying catches had to be of the largemouth bass variety and

measure at least 12" in length. A five fish limit was placed on each boat. Coming in first place was Doc McDaniel and Gary who posted a total weight of 16lbs 8ozs. Ken Johnson caught the biggest fish weighing in at 5lbs 4ozs. The top 6 finishers qualified for tournament prizes. Door prizes were also given away.



### THE GATEWAY GAZETTE

Editor: Aimee Williams-Dye

*Aimee Williams-Dye*

Marketing Manager

[adye@gatewaysupply.net](mailto:adye@gatewaysupply.net)

864.235.7800 Phone

864.235.7900 Fax



# GATEWAY SUPPLY COMPANY

## INDUSTRY LINKS

Link to Mechanical Contractors Association of SC  
<http://www.mcasc.com/>

Link to Plumbing Heating Cooling Contractors NC  
<http://www.phccnc.org/>

Link to South Carolina Association of Heating & Air Conditioning Contractors  
<http://www.schvac.org/>

Link to AHRAE  
<http://www.ashrae.com/>

Link to ASPE  
<http://aspe.org/>

Link to Home Builders Association of SC  
<http://www.hbaofsc.com/>

Link to Home Builder Association of NC  
<http://www.nchba.com/>

Link to Home Builders Association of GA  
<http://www.hbag.org/>

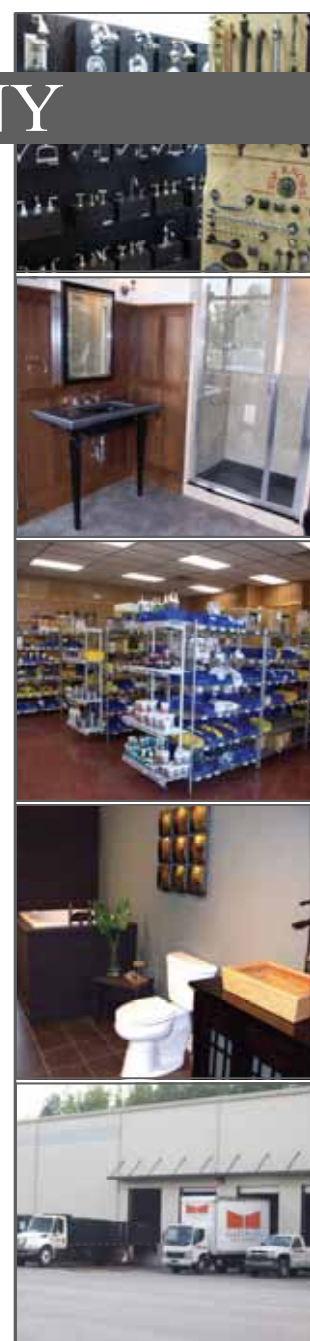
American Institute of Architects:  
<http://www.aiasc.org/>  
<http://www.aianc.org/>  
<http://www.aiaga.org/>

American Society of Interior Designers  
<http://www.asidcarolinas.org/>  
<http://www.asidga.org/>

Database of State Incentives for Renewables & Efficiency  
<http://www.dsireusa.org/>

CLICK LINK TO VIEW PAST  
EDITIONS OF  
**THE GATEWAY GAZETTE**

**THE GATEWAY  
GAZETTE**



## GATEWAY SUPPLY COMPANY, INC. LOCATIONS

### COLUMBIA, SC

1312 Hamrick Street  
Columbia, SC 29201

**800-922-5312**

803-771-7160 Plumbing

803-799-7632 HVAC

**803-376-5614 Fax**

### GREENVILLE, SC

70 Chrome Dr.  
Greenville, SC 29615

**800-922-9566**

864-235-7800 Plumbing

864-770-0860 HVAC

**864-235-7900 Fax**

### HARTSVILLE, SC

1015 Bobo Newsome Hwy  
Hartsville, SC 29550

**800-766-3159**

843-383-4574

Plumbing/HVAC

**843-383-9520 Fax**

### ROCK HILL, SC

1369 Firetower Road  
Rock Hill, SC 29731

803-324-3145

Plumbing

**803-324-3806 Fax**

### SPARTANBURG, SC

2320 South Pine Street  
Spartanburg, SC 29302

**800-379-5548**

864-585-8825

Plumbing

**864-585-4978 Fax**

### COLUMBIA NORTHEAST, SC

1110 Sparkleberry Lane Ext.  
Columbia Northeast, SC 29223

803-736-4848

Plumbing/HVAC

**803-736-3392 Fax**

### MYRTLE BEACH, SC

4928 Hwy 17, Bypass South  
Myrtle Beach, SC 29588

843-293-9367 Plumbing

843-293-9372 HVAC

**843-293-9377 Fax**

### WEST GREENVILLE, SC

2200 W. Parker Road  
Greenville, SC 29617

864-246-4322

Plumbing/HVAC

**864-246-4764 Fax**

### ANDERSON, SC

5299 Hwy 76  
Pendleton, SC 29670

864-622-0176

Plumbing/HVAC

**864-622-0181 Fax**