



SEPTEMBER / OCTOBER 2010

Eye on the Economy:

GDP Growth Revised Down, but Housing Makes Positive Contribution

By David Crowe
NAHB Chief Economist

The Bureau of Economic Analysis (BEA) has revised growth of the gross domestic product (GDP) in the second quarter down from 2.4% to 1.6%, indicating that decline from the first quarter's 3.7% was worse than originally thought. The revisions primarily raised imports and lowered private inventory investment and exports, subtracting from growth, but also increased personal consumer expenditures, partially offsetting the decline. The downward revision suggests that there is now a greater possibility of the economy suffering a double-dip recession, although most economists continue to believe that this will not occur.

NAHB has lowered its forecast of growth through the end of the year as the early indicators of weaker-than-expected economic activity have accumulated.[click here to read more on the article.](#)

USC FOOTBALL TAILGATE EVENTS

Saturday, October 9th USC vs Alabama

Saturday, October 30th USC vs Tennessee

Saturday, November 6th USC vs Arkansas



**Gateway Supply is hosting tailgate parties for the USC games listed above. Get all the details about Columbia tailgating from a Gateway Sales Associate.*

Builder After Hours



Gateway Supply Company hosted members of the HBA of Greenville for a Builder After Hours event on August 26, 2010. Hors d'oeuvres & cold beverages were served while everyone had the opportunity to socialize with other members of our business community. Door prizes were also given out during this event.



GATEWAY SUPPLY \$10 RINNAI REBATE

Rinnai®

TANKLESS WATER HEATERS

Gateway Supply Company will give you \$10.00 for each Rinnai Tankless Gas Water Heater You Purchase Between

August 1st – October 31st 2010

(Only for customers with a Gateway Supply customer account)



FREE MONEY!

For Every Rinnai Tankless Gas Water Heater purchased on your Gateway Supply account during the promotion period, we will load \$10.00 on a VISA Gift Card and send it to you in November (just in time for Christmas shopping)!



GATEWAY SUPPLY CO.

Call one of our locations today for more information!

COLUMBIA, SC

1312 Hamrick Street
Columbia, SC 29201

800-922-5312

803-771-7160 Plumbing

803-799-7632 HVAC

803-376-5614 Fax

GREENVILLE, SC

70 Chrome Dr.
Greenville, SC 29615

800-922-9566

864-235-7800 Plumbing

864-770-0860 HVAC

864-235-7900 Fax

HARTSVILLE, SC

1015 Bobo Newsome Hwy
Hartsville, SC 29550

800-766-3159

843-383-4574

Plumbing/HVAC

843-383-9520 Fax

ROCK HILL, SC

1369 Firetower Road
Rock Hill, SC 29731

803-324-3145

Plumbing

803-324-3806 Fax

SPARTANBURG, SC

2320 South Pine Street
Spartanburg, SC 29302

800-379-5548

864-585-8825

Plumbing

864-585-4978 Fax

COLUMBIA NORTHEAST, SC

1110 Sparkleberry Lane Ext.
Columbia Northeast, SC 29223

803-736-4848

Plumbing/HVAC

803-736-3392 Fax

MYRTLE BEACH, SC

4928 Hwy 17, Bypass South
Myrtle Beach, SC 29588

843-293-9367 Plumbing

843-293-9372 HVAC

843-293-9377 Fax

WEST GREENVILLE, SC

2200 W. Parker Road
Greenville, SC 29617

864-246-4322

Plumbing/HVAC

864-246-4764 Fax

ANDERSON, SC

5299 Hwy 76
Pendleton, SC 29670

864-622-0176

Plumbing/HVAC

864-622-0181 Fax

GATEWAY SUPPLY COMPANY

Grohe Counter Day

GROHE
Everyday Grohe



Gateway Supply Company hosted a Counter Day on September 2nd for Grohe to introduce **Everyday GROHE** - The world's premier faucet brand brings you pricing and styles suited for everyday use. The product selection in this program is targeted to the plumbing contractor who recognizes quality and value. Our worldwide top sellers are now available when you need it AND at competitive pricing.

Finishes only available in StarLight Chrome & Brushed Nickel InfinityFinish



Concetto



Arden



Eurosmart



Isabella Sherman
Grohe Representative



Isabella Sherman and Brian Hoffman
with Hoffman Plumbing

GROHE Rainshower® Rainbow Collection

Yellow for the sun, red for love or just a touch of blue...Life is made of colors, and everyone has their favorite. So why not start the day with a cheery touch of color? The brand new GROHE Rainshower Rainbow Collection offers all the colors of the rainbow teamed with a high-gloss chrome handle. The six new models in the popular Rainshower Icon handshower range combine



award-winning design with a great shower experience and a trendy choice of colors. List Price \$114.00[CLICK HERE TO READ MORE.....article by GROHE](#)

Danze Cobalt Collection—Vitreous China Fixtures

DANZE INTRODUCES COBALT COLLECTION OF VITREOUS CHINA FIXTURES

Homeowners looking for high-efficiency toilets with innovative design will appreciate Danze's new Cobalt Collection introduced at this year's Kitchen & Bath Industry Show in Chicago.

A highlight of this new collection is its two variations of high-efficiency toilets (1.28gpf) - a 2-piece elongated option and a 1-piece compact elongated option. The toilets both feature the same high-performance platform as all other Danze HETs: a best-in-class 3" flush valve that ensures a powerful flush every time.



**Tested 1.28 Flush which will flush 1000 grams of MISCO which is the highest testable level.*



GATEWAY SUPPLY COMPANY

Adopt-A-Highway Program

AAA Accurate Plumbing Solutions participated in the Adopt-A-Highway Midlands Beautiful Highway clean-up on Saturday August 28th, 2010.

The Adopt-A-Highway program began in South Carolina in 1988, and has been one of the most successful programs in combating litter along our highways ever enacted.....[Click here to read more about Adopt-A-Highway.](#)



Pictured is Joe Miller with AAA Accurate Plumbing & Allen Listrom with Gateway Supply Company.



Ashley & Mary Beth Listrom (daughters of Allen Listrom) helped out Saturday for the adopt a highway program.



GERBER launches a micro sight gerbergreenonline.com which shows the water and money savings through using more efficient products. Check out the new Water Calculator.....[CLICK HERE!](#)

Dual Flush Toilet Kit



Introducing the New Dual Flush Toilet Kit. It is simple to install and you can save 20-30 gallons of water per day for an average family! The Dual Flush Toilet Kit has a dual action handle that you push one way to rinse liquids and push the other way to flush solids.

Household Water Savings

- Reduce water and sewage bills.
- Save 20-30 gallons per day for an average family
- Save thousands of gallons per year
- Lower your household water intake
- Lower your sewage usage
- Reduce the impact on septic systems
- Positively effect the environment immediately
- In water restricted areas, a dual flush toilet kit can save up to \$15 month

Part No. T02-067 / List Price - \$41.77

**if your toilet tank has not been removed in the past ten years, it may be necessary to replace the tank seal and hold down bolts after installing the new valve.*



GATEWAY SUPPLY COMPANY



Heating, Cooling Equipment Shipments Continue to Rise

August 11, 2010

U.S. factory shipments of both residential and commercial heating & cooling equipment increased in June, with the largest growth coming from warm air furnaces, according to the Air-Conditioning, Heating and Refrigeration Institute (AHRI).

Residential Water Heaters

U.S. shipments of residential gas water heaters have increased 11 percent, to 2,119,820 units, compared to 1,914,465 units shipped during the same period in 2009. Residential electric water heater shipments increased 3 percent year-to-date, to 1,990,401 units, compared to 1,925,878 units shipped at the same time last year.

Commercial Water Heaters

Year-to-date U.S. shipments of commercial gas water heaters also increased 4 percent to 42,102 units, compared with 40,331 units shipped during the same period in 2009. Year-to-date commercial electric water heater shipments increase a small 1 percent to 29,620 units from the same time in 2009.

Warm Air Furnaces

Again, the biggest increase was seen on the warm air side. U.S. shipments of gas warm air furnaces increased 18 percent, which grew from 895,614 units shipped during the same period in 2009 to 1,059,502 units in 2010. Year-to-date U.S. shipments of oil warm air furnaces increased 16 percent to 21,491 units, compared with 18,469 units shipped during the previous year.

Central Air Conditioners and Air-Source Heat Pumps

Year-to-date combined shipments of residential central air conditioners and air-source heat pumps increase 6 percent, to 2,949,141 units, up from 2,785,134 units shipped in June 2009. Year-to-date shipments of central air conditioners also increased 5 percent, to 1,959,845 units, up from 1,867,674 units shipped during the same period in 2009. The year-to-date total for heat pump shipments increase 8 percent, to 989,296 units, up from 917,460 units shipped during the same period in 2009.For more information and chart data, [CLICK HERE](#).

NEW TO OUR GATEWAY SUPPLY FAMILY



Chris Henderson

HVAC Outside Sales

Joins Gateway's Greenville Location

chenderson@gatewaysupply.net



Dan Meyer

Commercial Plumbing Quotations Coordinator

Joins Gateway's Columbia Location

dmeyer@gatewaysupply.net

GATEWAY SUPPLY COMPANY

INDUSTRY LINKS

Link to Mechanical Contractors Association of SC
<http://www.mcasc.com/>

Link to Plumbing Heating Cooling Contractors NC
<http://www.phccnc.org/>

Link to South Carolina Association of Heating & Air Conditioning Contractors
<http://www.schvac.org/>

Link to AHRAE
<http://www.ashrae.com/>

Link to ASPE
<http://aspe.org/>

Link to Home Builders Association of SC
<http://www.hbaofsc.com/>

Link to Home Builder Association of NC
<http://www.nchba.com/>

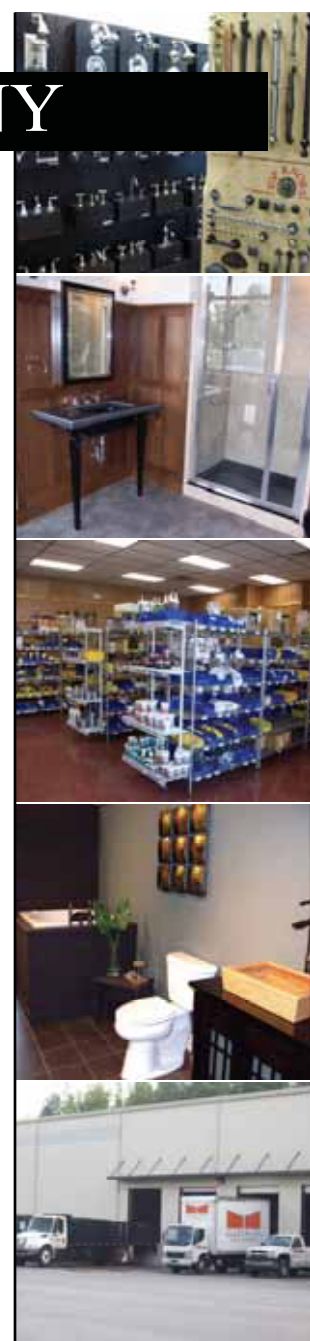
Link to Home Builders Association of GA
<http://www.hbag.org/>

American Institute of Architects:
<http://www.aia.org/>
<http://www.aia.org/>
<http://www.aia.org/>

American Society of Interior Designers
<http://www.asidcarolinas.org/>
<http://www.asidga.org/>

CLICK LINK TO VIEW PAST
EDITIONS OF
THE GATEWAY GAZETTE

THE GATEWAY
GAZETTE



GATEWAY SUPPLY COMPANY, INC. LOCATIONS

COLUMBIA, SC

1312 Hamrick Street
Columbia, SC 29201

800-922-5312

803-771-7160 Plumbing
803-799-7632 HVAC

803-376-5614 Fax

GREENVILLE, SC

70 Chrome Dr.
Greenville, SC 29615

800-922-9566

864-235-7800 Plumbing
864-770-0860 HVAC

864-235-7900 Fax

HARTSVILLE, SC

1015 Bobo Newsome Hwy
Hartsville, SC 29550

800-766-3159

843-383-4574
Plumbing/HVAC

843-383-9520 Fax

ROCK HILL, SC

1369 Firetower Road
Rock Hill, SC 29731

803-324-3145

Plumbing

803-324-3806 Fax

SPARTANBURG, SC

2320 South Pine Street
Spartanburg, SC 29302

800-379-5548

864-585-8825
Plumbing

864-585-4978 Fax

COLUMBIA NORTHEAST, SC

1110 Sparkleberry Lane Ext.
Columbia Northeast, SC 29223

803-736-4848

Plumbing/HVAC

803-736-3392 Fax

MYRTLE BEACH, SC

4928 Hwy 17, Bypass South
Myrtle Beach, SC 29588

843-293-9367 Plumbing

843-293-9372 HVAC

843-293-9377 Fax

WEST GREENVILLE, SC

2200 W. Parker Road
Greenville, SC 29617

864-246-4322

Plumbing/HVAC

864-246-4764 Fax

ANDERSON, SC

5299 Hwy 76
Pendleton, SC 29670

864-622-0176

Plumbing/HVAC

864-622-0181 Fax